

# Comprehensive selection of transducers

## Curved array transducers



**CA2-8AD**

- Application : abdomen, obstetrics, gynecology



**CF4-9**

- Application : pediatric, vascular

## Linear array transducer



**LA3-16AD**

- Application : small parts, vascular, musculoskeletal

## Volume transducers



**VN4-8**

- Application : abdomen, obstetrics, gynecology



**V5-9**

- Application : obstetrics, gynecology, urology

## Endocavity transducer



**EVN4-9**

- Application : obstetrics, gynecology, urology

## Phased array transducer



**PN2-4**

- Application : abdomen, cardiac, vascular

## CW transducer



**DP2B**

- Application : cardiac

Samsung Medison, an affiliate of Samsung Electronics, is a global medical company founded in 1985. With a mission to bring health and well-being to people's lives, the company manufactures diagnostic ultrasound systems around the world across various medical fields. Samsung Medison has commercialized the Live 3D technology in 2001 and since being part of Samsung Electronics in 2011, it is integrating IT, image processing, semiconductor and communication technologies into ultrasound devices for efficient and confident diagnosis.

CT-HS40 V1.0-GI-FT-170411-EN

\* This product, features, options, and transducers are not commercially available in all countries. Due to regulatory reasons, their future availability cannot be guaranteed. Please contact your local sales representative for further details.

**SAMSUNG MEDISON CO., LTD.**

© 2017 Samsung Medison All Rights Reserved.

Samsung Medison reserves the right to modify the design, packaging, specifications, and features shown herein, without prior notice or obligation.

# Establish everyday efficiency

## Ultrasound system HS40



Scan code or visit  
[www.samsungmedicalsolution.com](http://www.samsungmedicalsolution.com)  
to learn more



**SAMSUNG**

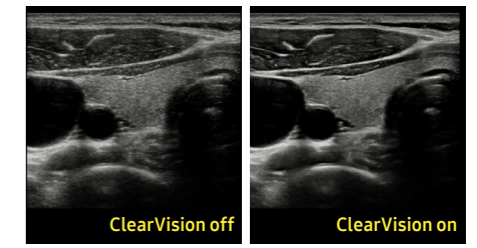


# Extraordinary image quality for a clearer view

With the astonishingly clear view provided by Samsung's advanced imaging technologies, you can make clinical decisions with greater confidence.

## ClearVision

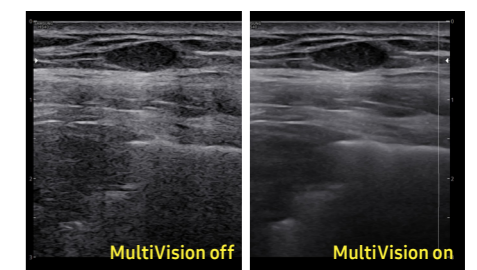
The noise reduction filter improves edge enhancement and creates sharper 2D images for optimal diagnostic performance. The integration of specialized Samsung technology results in a notable improvement in image quality. In addition, ClearVision provides application-specific optimization and advanced temporal resolution in live scan mode.



Thyroid

## MultiVision

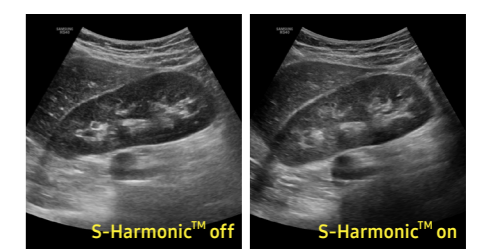
MultiVision controls ultrasound beam electronically by steering, and compounds many scan lines for better image. MultiVision provides remarkable spatial and contrast resolution with even greater artifact suppression than ever before.



Breast

## S-Harmonic™

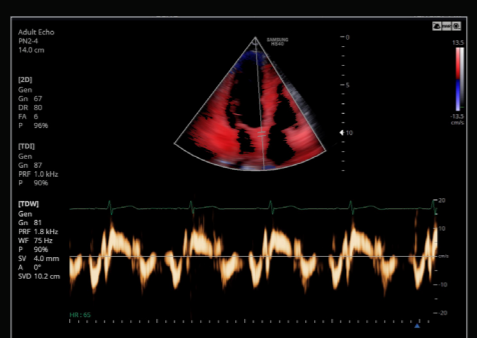
This new harmonic technology provides greater image uniformity from near to far field while reducing signal noise. Combined with ClearVision and MultiVision, S-Harmonic™ improves the image quality of HS40.



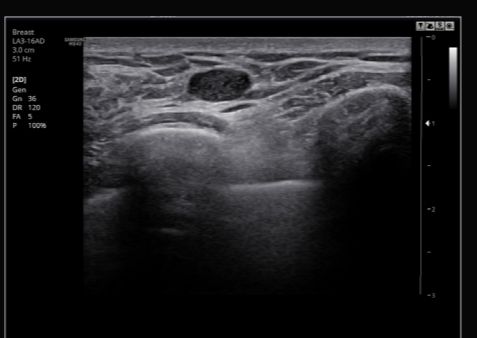
Kidney



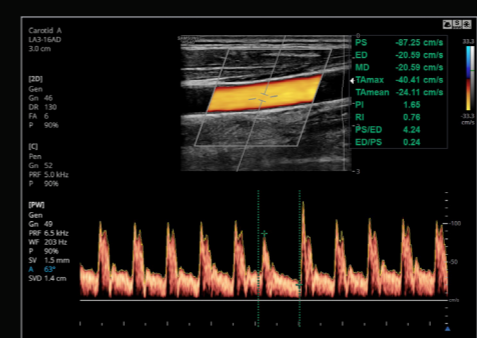
Pancreas



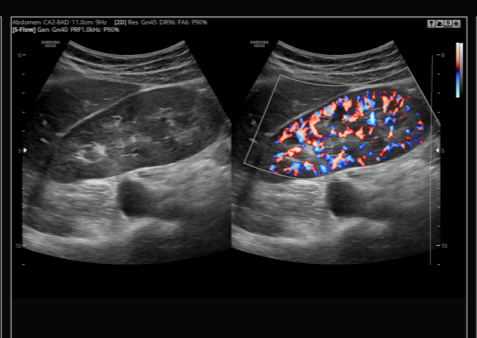
Adult echo in TDW



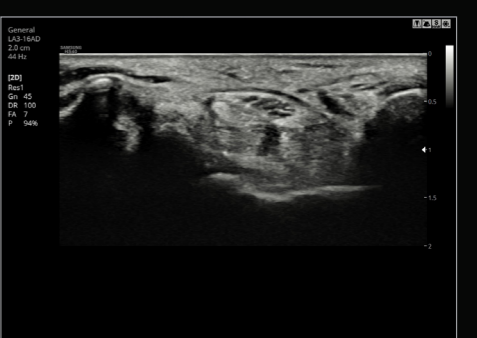
Breast



CCA in PW



Kidney in S-Flow™



Wrist

# Enhanced tools for optimized care

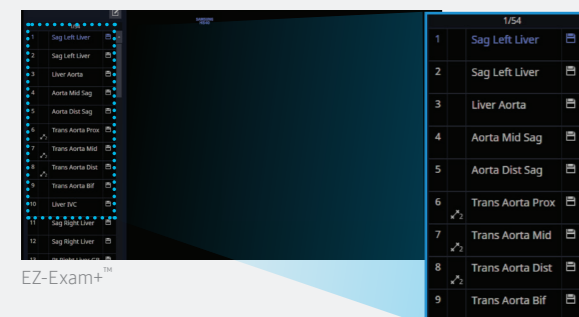
Samsung's advanced yet budget-friendly tools, previously exclusive to our premium ultrasound platforms, enhance vascular, cardiac, musculoskeletal, and small parts exam capabilities for efficient and effective care.



## EZ-Exam+™

※ Optional Extra

EZ-Exam+™ enables users to build or to use predefined protocols. It transforms the ultrasound investigation into a streamlined process.



EZ-Exam+™

## Quick Preset

With one touch, the user can select the most common transducer and preset combinations. Quick Preset maximizes efficiency to make a full day of scanning simple and easy.

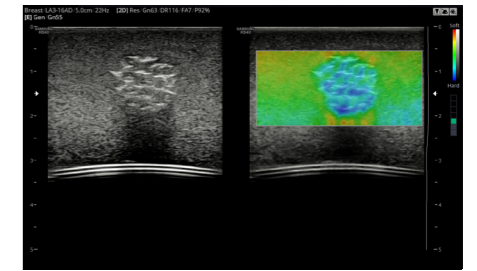


CA2-8AD

## ElastoScan™

※ Optional Extra

A diagnostic ultrasound technique for imaging elasticity, ElastoScan™ detects the presence of solid masses in tissues and converts any stiffness into color images.

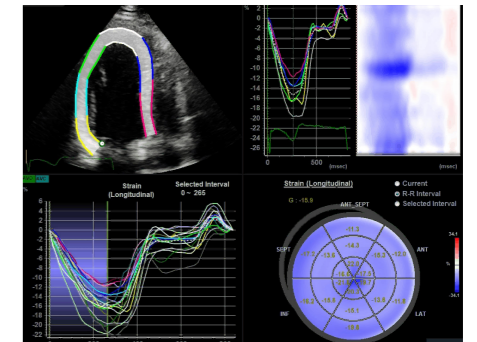


ElastoScan™ (Phantom)

## Strain+

※ Optional Extra

Strain+ is a quantitative tool for global and segmental wall motion of the left ventricle (LV). In Strain+, three standard LV views and a Bull's Eye are displayed in a quad screen for easy and quick assessment of the LV-function.

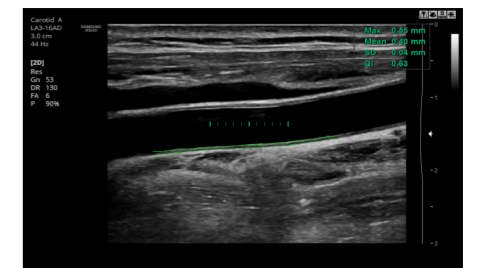


Adult echo

## Auto IMT+

※ Optional Extra

Auto IMT+ is a screening tool to analyze a patient's potential risk of cardiovascular disease. It allows easy intima-media thickness measurement of both the anterior and posterior wall of the common carotid by the click of a button. This simple procedure enhances exam productivity and adds diagnostic value.



CCA

## NeedleMate+™

※ Optional Extra

NeedleMate+™ ensures precise needle targeting when performing commonly used intervention procedures.

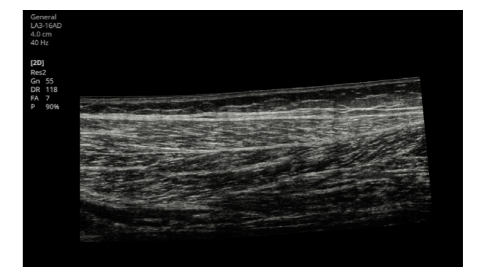


NeedleMate+™ (Phantom)

## Panoramic

※ Optional Extra

Panoramic imaging displays an extended field-of-view allowing users to examine a wider area. Panoramic imaging also supports angular scanning with data acquired from the linear and convex transducer.



Low extremity muscle

# User-friendly design

HS40's ground-breaking design was inspired by users' ideas and suggestions during development. Every detail, such as the fully articulating monitor arm, the operating panel which can be easily adjusted to different heights, and additional storage space, has been created to make the work environment more comfortable. And it is this focus on the user that has led to the product winning a prestigious 2017 iF Design Award.



## 1. Articulating monitor arm

With a wide range of motion, the fully articulating monitor arm adapts to your changing needs.



## 2. Height-adjustable operating panel

Adjust the operating panel to your preferred height without straining, thanks to the smooth upward and downward motion of the gas lift.



## 3. Endocavity transducer holder

HS40 features an endocavity transducer holder, side-mounted on the console for convenience when performing gynecological scanning. \* Optional Extra



## 4. Gel warmer \* Optional Extra

Two-level adjustable gel warmer maintains ultrasound gel at a comfortable temperature.



## 5. Side storage \* Optional Extra

The side storage is ideal for storing a tablet, patient charts, or other items that you need to keep close at hand.



## 6. Rear tray \* Optional Extra

HS40's rear tray provides extra storage space for the endocavity transducer and other items.



## 7. Low noise

This exceptionally quiet device allows physical exams to be performed, including auscultation, while the ultrasound system is turned on.



## 8. Printer cover \* Optional Extra

The user-friendly cover tidies and hides away printer cables that may otherwise become tangled.

