

Samsung Medison is a global leading medical devices company. Founded in 1985, the company now sells cutting-edge medical devices including diagnostic ultrasound, digital X-ray and blood analyzer around the world. The company has attracted global attention in the medical field with its R&D capabilities and advanced technologies. In 2011, Samsung Medison became an affiliate company of Samsung Electronics, integrating its IT, image processing, semiconductor and communication technologies into medical devices.

CT-U6 V1.02 RAD-FTW-141204-EN



Scan code or visit  
<http://www.samsungmedison.com>  
to learn more

**SAMSUNG MEDISON CO., LTD.**

© 2014 Samsung Medison All Rights Reserved.  
Samsung Medison reserves the right to modify the design, packaging, specifications, and features shown herein, without prior notice or obligation.

# Samsung Ultrasound MySono U6

The smart choice



**SAMSUNG**



## Redefined mobility

Outstanding imaging, ergonomics and portability

## Quality through technology

MySono U6 provides the upgraded content optimization for a portable system. Vastly improved resolution allows you to provide accurate clinical outcomes. It also enables you to work quickly and efficiently through its image optimization functions and extended measurement functions.

### QuickScan™

Important imaging parameters can be optimized with a touch of a button, enhancing workflow efficiency. In 2D imaging, QuickScan™ quickly optimizes contrast and brightness levels by adjusting the gain and TGC controls. In PW Spectral Doppler Mode, QuickScan™ easily optimizes the spectrum by adjusting the scale and baseline.

### SRF™ (Speckle Reduction Filter™)

SRF™ enhances image quality by reducing or eliminating the appearance of speckle echoes from ultrasound images. The degree of speckle reduction is userselectable.

### DMR+ 2.0™

The powerful DMR+ 2.0™ software improves the contrast resolution of ultrasound images, enabling you to see subtle differences in tissue.

### SCI™ (Spatial Compounding Image™)

SCI™ controls ultrasound beam electronically by steering, and compounds many scan lines for better image. SCI™ provides remarkable spatial and contrast resolution with even greater artifact suppression than ever before.

### Auto IMT™

Auto IMT+™ allows automatic Intima-Media Thickness measurement of both the near and far walls of the Common Carotid Artery for analyzing patients' risks of stroke and heart diseases.

### Various measurement package

A wide range of general measurements such as cardiac, gynecology, obstetrics, musculoskeletal, pediatric and vascular measurements are available in the MySono U6.

## Workflow that enhances

### Workflow solutions to enhance patient throughput

The MySono U6 enhances patient throughput by easy connection to image archiving systems and user-friendly standby mode.

#### SonoView™

SonoView™ image management software offers the possibility of seamless integration with image archive systems or hospital PACS.

#### DICOM 3.0 connectivity

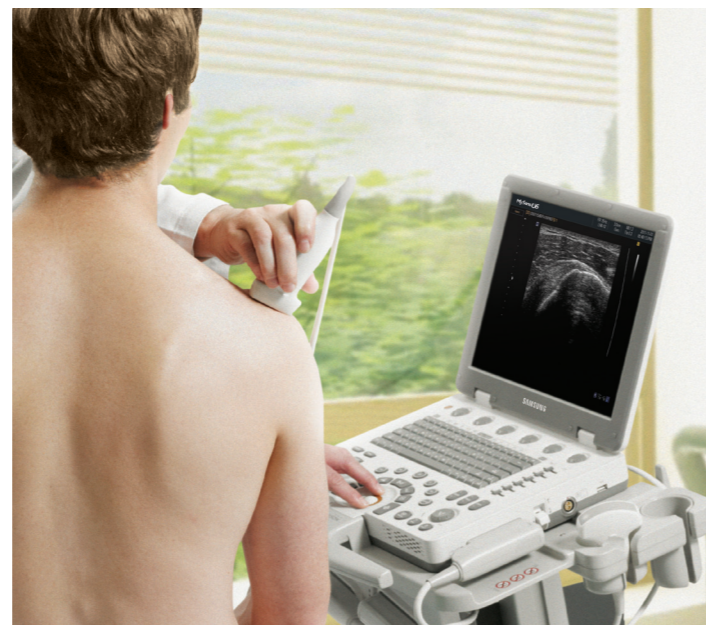
The MySono U6 supports DICOM store and DICOM storage commit, to store ultrasound studies safely into an image archive.

#### Wired and wireless LAN support

The MySono U6 can receive the DICOM patient list and send DICOM study data through wired and wireless connections to the PACS or image archive.

#### Standby mode

Simply opening the cover in standby mode allows fast operation within seconds.



## If ergonomics are the issue

### Samsung's compact hand carried ultrasound system

The MySono U6 is a smart and lightweight ultrasound system with lower power consumption that can be easily transported, operated, and stored. At the bedside, in the operating room, or near the sports field, MySono U6 is always ready for the use.



#### Compact and lightweight

The MySono U6's slim design and 5.6 kg weight make it compact and easy to carry.

#### Ergonomic design

Major key functions are grouped under the palm of your hand for excellent efficiency and applied ergonomics. The optional cart is equipped with front and back handles for mobility.

#### High resolution 15-inch LED monitor

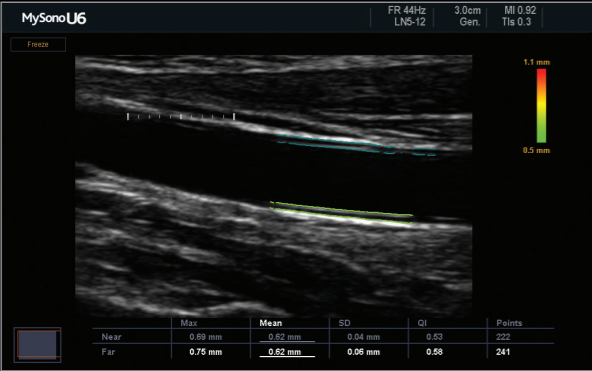
MySono U6's 15-inch LED monitor delivers high quality image.

#### Backlit keyboard and control panel

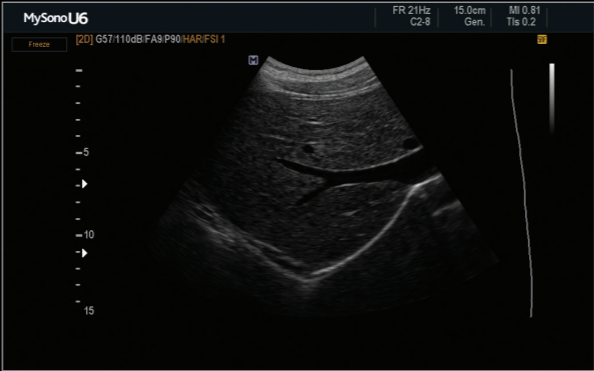
The MySono U6 features a color backlit LED keyboard and control panel that enables you to work in dark surroundings.



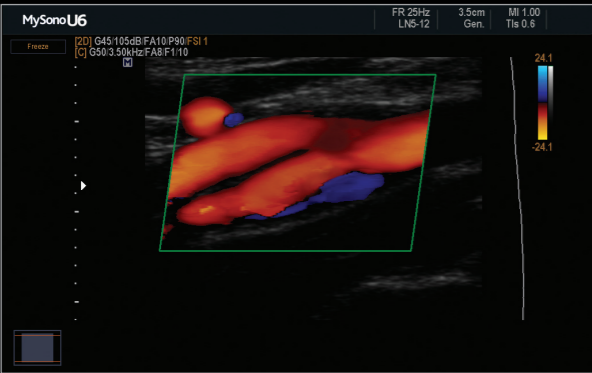
# Image gallery



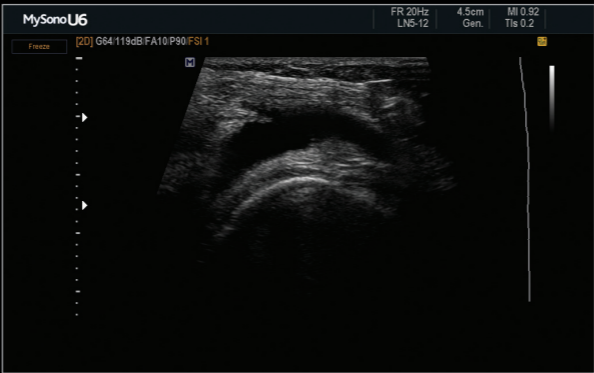
Auto IMT™



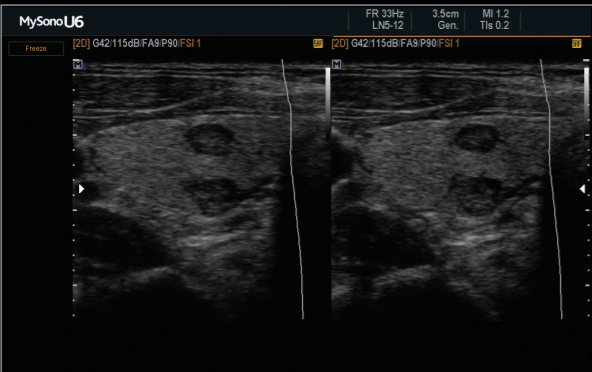
Liver SRF™ image



CCA bifurcation color Doppler



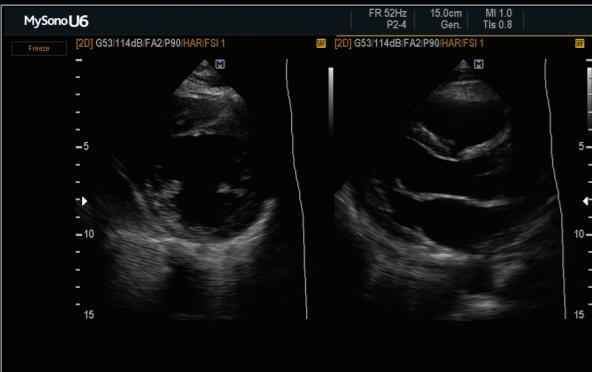
Rheumatoid arthritis



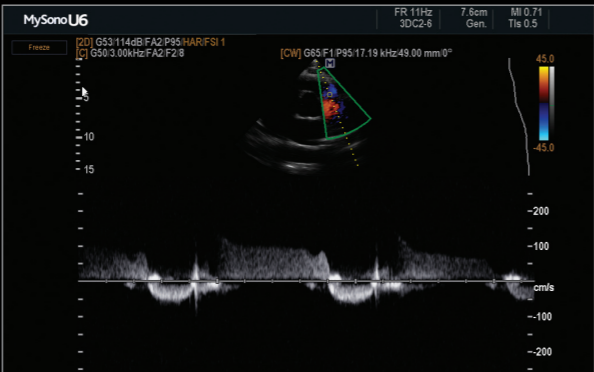
Thyroid mass in dual mode



GB Polyp in zoom



Parasternal short & long axis



Pulmonary trivial regurgitation with CW

# Smart choice for your needs

Across a variety of applications such as general imaging, cardiovascular, obstetrics and gynecology, the MySono U6's transducers ensure accurate diagnosis.

## Curved array transducers



### C2-5

- Application : abdomen, obstetrics, gynecology
- Field of view : 47.7°



### C2-8

- Application : abdomen, obstetrics, gynecology
- Field of view : 68.17°



### C4-9

- Application : abdomen, pediatric, neonatal, vascular
- Field of view : 156.52°

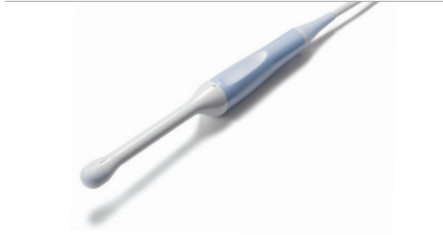
## Linear array transducer



### LN5-12

- Application : small parts, vascular, musculoskeletal
- Field of view : 38.1mm

## Volume transducers



### 3D4-9

- Application : obstetrics, gynecology, urology
- Field of view : 145°



### 3DC2-6

- Application : abdomen, obstetrics, gynecology
- Field of view : 69°

## Endocavity transducer



### EVN4-9

- Application : obstetrics, gynecology, urology
- Field of view : 148°

## Phased array transducer



### P2-4

- Application : abdomen, cardiac, pediatric cardiac, TCD
- Field of view : 90°

## CW transducer



### CW2.0

- Application : cardiac